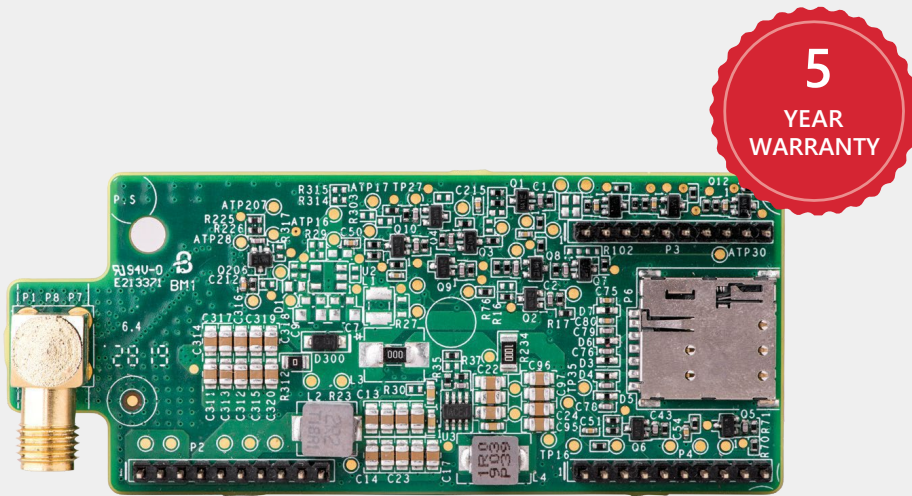


Cellular Plug-In

CELL-B-R0-GLO-V-S0

COMMUNICATION



Cellular Internet Connectivity for Commercial and Residential Installations

- Compatible with SetApp-enabled inverters
- Connects SolarEdge inverters wirelessly to the internet
- No need for internet infrastructure at site
- Installed within the inverter enclosure for outdoor resilience, or in the communication gateway
- Supports high bandwidth monitoring of inverters, optimizers, batteries, meters and weather stations
- Enables remote analysis and troubleshooting



/ Cellular Plug-In

CELL-B-R0-GLO-V-S0

Model Number: CELL-B2

COMPATIBLE INVERTERS		(All SolarEdge Inverters with SetApp Configuration)	UNITS
Number of Monitored Inverters with a Single Cellular Plug-in	Commercial: Up to 32 inverters ⁽¹⁾ Residential: 1 inverter		
Monitoring	Data sampled every 5 minutes and sent to SolarEdge server continuously		
Monthly Data - per Inverter	7.8		MB
Monthly Data - per Power Optimizer	0.15		MB
Monthly Data - per Revenue Grade Meter	0.3		MB
Monthly Data - per Export or Consumption Meter	3		MB
Monthly data - Commercial Gateway	3		MB
RF PERFORMANCE		OPERATING FREQUENCY	
LTE Cat-1 FDD	Band/ Freq (MHz)	Modern Transmit / Modern received	
	2100 (B1)	1920-1980 / 2110-2170	MHz
	1800 (B3)	1710-1785 / 1805-1880	MHz
	2600 (B7)	2500-2570 / 2620-2690	MHz
	900 (B8)	880-915 / 925-960	MHz
	800 (B20)	832-862 / 791-821	MHz
	700 (B28A)	703-748 / 758-803	MHz
WCDMA	2100 (B1)	1920-1980 / 2110-2170	MHz
	900 (B8)	880-915 / 925-960	MHz
GSM	900 (EGSM)	880-915 / 925-960	MHz
	1800 (DCS)	1710.2-1784.8 / 1805.2-1879.8	MHz
Maximum Transmit Power	LTE FDD	23 dBm ± 2dB	
	WCDMA	24 dBm +1dB/-3dB	
	GSM	33 dBm ± 2dB	
Receiver Input Sensitivity Cat-1	LTE FDD	-97	
	WCDMA	-109	
	GSM	-108.6	
Bandwidth	1.4 - 20 ⁽²⁾		MHz
Modulation	LTE	Downlink: QPSK\16QAM\64QAM, Uplink: QPSK\16QAM	
	WCDMA	Downlink: QPSK, Uplink: BPSK	
	GSM	Downlink: GMSK, Uplink: GMSK	
ANTENNA			
Dual Antenna Bands	690-960 / 1710-2700		MHz
Antenna Type	Outdoor		
Antenna Connector	RP-SMA or N plug		
VSWR	≤4.0		
Gain	2		dBi
Polarization	Vertical		
Material	PC Lexan 503R-WH5151L or WH8G952 Sabic		
Dimensions (Length x Diameter)	7.87 x 0.78 / 200 x 20		in / mm
Cable Length	71 / 180		in / mm
STANDARD COMPLIANCE			
EMC and Radio	Global: GCF, Europe: CE, Australia & New Zealand: RCM, Russia: FAC		
RoHS	Yes		
INSTALLATION SPECIFICATIONS			
Dimensions (L x W x H)	3.07 x 1.27 x 0.55 / 78.2 x 32.5 x 14.2		in / mm
Operating Temperature	-40 to +85 / -40 to +185		°C / °F
Mounting	Built into the inverter or purchased separately		
Power consumption	LTE: 2.8 (@23dBm output power) GSM: 2.4 (@33dBm output power) WCDMA: 2 (@24dBm output power)		W
SIM CARD HOLDER			
Type ⁽³⁾	Nano Sim		

* Information concerning the Data Plan's terms & conditions is available in the following link: <https://www.solaredge.com/sites/default/files/se-communication-plan-terms-and-conditions-eng.pdf>

(1) For larger systems, use multiple cellular plug-ins

(2) The exact value depends on actual operating band

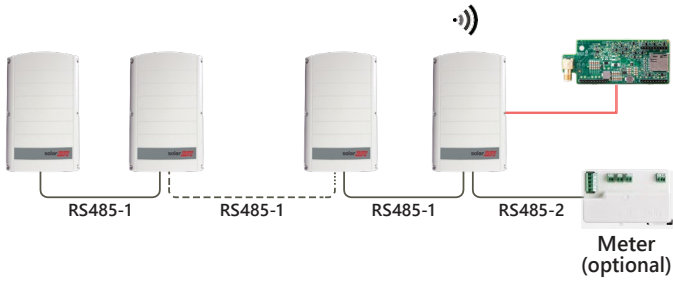
(3) Non-SolarEdge SIM cards must be LTE Cat-1 or GSM/WCDMA Cellular compatible



/ Cellular Plug-in

CELL-B-R0-GLO-V-S0

Single or Multiple Commercial Inverters



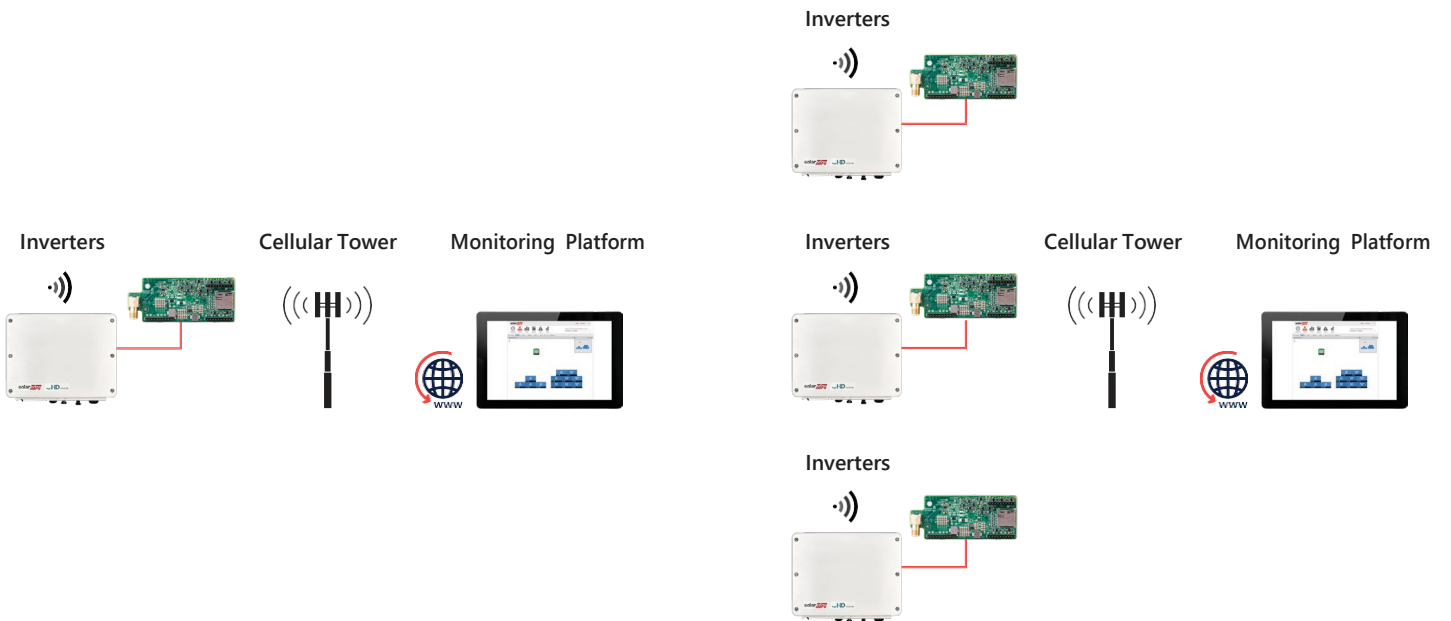
Cellular Tower



Monitoring Platform



Single or Multiple Residential Inverters



CE

© SolarEdge Technologies, Inc. All rights reserved. SOLAREEDGE, the SolarEdge logo, OPTIMIZED BY SOLAREEDGE are trademarks or registered trademarks of SolarEdge Technologies, Inc. All other trademarks mentioned herein are trademarks of their respective owners. Date: 11/1/2022 DS-000038-ENG. Subject to change without notice.



Densys pv5

| We deliver. You install. The sun does all the rest. |

Data sheet provided for you @ www.densys-pv5.de

solaredge